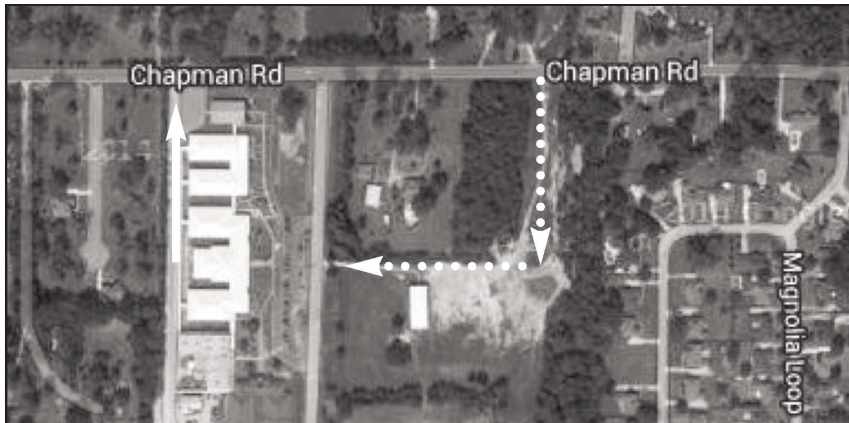


Road project aims to ease strain on Chapman Road

Written by News Desk

Thursday, 10 July 2014 14:25 - Last Updated Thursday, 10 July 2014 15:44



A new road is under construction for passenger cars at Millbrook Middle/Junior High School. The project is scheduled to be complete by opening day of school (August 4, 2014).

Photo: Google Maps

By BRIAN HODGE

Construction has begun on a new entrance for passenger cars at the Millbrook Middle/Junior High School campus. According to Principal Ayena Jackson, the goal is to make it easier to load and unload students at the school in the mornings and afternoons and to reduce the number of passenger cars parked on the shoulders of Chapman Road during those times.

The new entrance is aligned next to a utility easement not far from the existing main entrance to the school, the 4-lane road will route around a private home adjacent to the school and turn back toward the campus to terminate next to an outdoor/athletic facility across from the main campus (see dotted white lines in the photo above). Passenger cars will enter and exit the campus via this new road according to Jackson. Buses will enter the campus from Stanhope Elmore High School and exit onto Chapman Road through the back entrance of the school (see solid white line in the photo above).

The estimated day of completion is Friday August 1, 2014, only three calendar days before school is scheduled to begin.

Road project aims to ease strain on Chapman Road

Written by News Desk

Thursday, 10 July 2014 14:25 - Last Updated Thursday, 10 July 2014 15:44

"I'm crossing all my fingers and toes that they are able to get this done on time," Jackson said.